



# To Understand The Selection Of Potency With Susceptibility In Children To Evaluate The Efficiency Of L.M.Potency in Fever

Dr. Santosh Wasudeorao Chincholkar (Research Scholar, Tantia University)

Dr. D.K. Bhardwaj (Research Supervisor, Tantia University)

## Abstract

**Background:** In acute febrile condition when sudden onset high grade fever especially in children whole family anxious about health of child and expect that as early as possible child will get rid from this state. As per principle of Homoeopathy selection of Homoeopathic medicine selected on basis symptoms Similarities in acute of phase high grade need exact amount medicinal substance administered ie dose to overcome this state to restored complete health L.M potency more effective then decimal and centesimal potency ,no bound of frequent repetition potency is selected on assessment ability of individual during febrile Many of acute fever condition cases were treated by giving L.M.potency when repetition of centesimal higher potencies show less effective in time. Today the childrens amenities tendency body changing and their ability so changing the susceptibility level where we obtained obstacle to cure there much need of L.M.potency to recovery such cases The aim of the study is to comparatively analyze the effect of L.M.potency achieve early cure then other scale potency especially in children fever

**METHODOLOGY:** It is propective intervention comparison study between two group using randomly selected 100 cases(Age group between 1yr-10yr) attending the OPD&IPD of sri ganganagar Homoeopathic Medical college Hospital & research centre rajasthan Everywhere havig acute febrile illness with generally high susceptibility and also low as per the immunity The selected 100 cases were divided into two groups as group 1( 50 cases)and group2 (50 cases).group 1 selected medicine given in decimal & centesimal potency group 2 selected medicine are given in L.M.potency Diagnostic criteria is mainly based on Clinical presentation and improvement was assessed based on the Symptomatic relief.

**Discussion:** This scientific study show that when given in group 1 susceptibility medium or low it gave result but it take time to response and if high susceptibility obtained less result where need of repetition potency & there is chances Homoeopathic Aggravation as Compare to group 1 in group 2 where medium or low potency in L.M.potency gave better result but need more repetition because recurrence and where high susceptibility obtained quick action less repetition with rapid recovery of complete health in shortest time in cases.

Key word's; Fever in children, susceptibility, L.M.Potency Prospective

## INTRODUCTION

The efficiency of L.M potency in Acute febrile condition, Fever is not an illness ,it is a sign and symptoms of our body that shows reaction fighting against illness or infection .It always stimulate the body defense Mechanism and WBC and other cell developed immunity against infection. It nothing but change in susceptibility of patient and become sick individual The susceptibility is one of the important factor or parameter to Measure the sensitivity ability capability of the individual which help us during selection of potency.

Today's Common problem in day to day Life that Children, are more sensitive & susceptible to common cold, cough and more frequently suffering with fever .As body temperature rise child become more uncomfortable, irritable in general and if body temperature rises high grade ,the sensitive child may developed seizures called febrile seizure. Highly susceptibility child are more prone suffer from febrile seizure. In early childhood 1yr to 5yr in development period where organs are more sensitive to being developed and susceptibility much powerful in Natural



Multidisciplinary Indexed/Peer Reviewed Journal. SJIF Impact Factor 2023-6.753

state of health ,where body own efficiency or power to cure and overcome from natural disease(organon \$ 30) The role susceptibility is being important to derangement of health of Man, unconditionally ,we are able to sick only by when our organism is sufficiently disposed and susceptibility attack by morbidic cause ,which altered in its health& undergoes abnormal sensation & function, they doesn't produce disease in everyone nor all times(1,2) \$31 As per \$ 32 Every real medicine acts all times under all circumstances on every living human being and produces its peculiar symptoms if dose being sufficient enough to overcome from it(1,2)when susceptibility is satisfied there is a cessation of cause and cure achieved.....KENT VIEW

As per H. Robert..... Susceptibility is reaction of organism to external & internal influence resulting in development of protective immunity against their environmental Condition (3) that's too need today's Children those who are suffering from fever and susceptibility play vital role in every sphere of action of living organism health disease & cure.

In fever when due any cause like virus, bacteria, heat exhaustion patho physiologically body temperature increased due to infection & simultaneously defense mechanism activate to fight against disease is natural mechanism in order to protect itself and in children they are more powerful to protect them,then ,any other individual .fever can rise high or low as per power of defense reaction against infection. low grade counted upto 100F and High grade 101F and above temperature above 104F

**There are different pattern of fever as per there course of appearances High, medium, low along with episodes are as follow**

- 1)**Intermittent Fever** (the temperature rise but fall to the normal each day)
- 2)**Remittent Fever**(the temperature elevated but not fall to the normal each day)
- 3)**Continous Fever** (remain constant)
- 4)**Hectic Fever**(spiking fever daily one of which peak the temperature)
- 5)**Relapsing Fever**(recurrent febrile episodes)

Fever is an part of indication of increased activity on the part if immune system mostly in response of infection and indicate the sign and symptom that there is an ability to react. ie susceptibility, it quality or capability of living organism of receiving impression the power react to stimuli .The improvements and cure depend upon the power of organism to react the impression

In Homoeopathy it has been experimentally proved that inspite of correctly selected medicine on basis of symptoms similarities it will not act up to cure unless it given in proper potency .potency means the amount of potent part present in prescribe dose .The selection of potency depends upon the susceptibility present high medium ,low where several factor modified, by Age Constitution ,Temperament Habit, environment, Nature and intensity of disease Homoeopathic potency are preparing in three scale X decimal C centesimal ,L.M 50 milisemal today there is need of instant result of potency as Dr s Hahnemann itself noticed after using Decimal &centesimal potency intense Aggravation, less reapeation,time consuming but L.M. Potency is published in 6<sup>th</sup> edition of organon of Medicine in sec 270\$ & RENEWED DYNAMISATION sec 161 in footnote 1,sec 132 he writes "NEW ALTERED BUT PERFECT METHOD" Later on Dr pierre Schmidt gave name 50milisemal,L.M POTENCY

A brief study course of Homoeopathy " chapter "prescribing potency selection' The Chronic Disease and Organon of medicine" According Dr Hahnemann \$247, 6<sup>th</sup> edition" CURE does not take place when we repeat the same unchanged dose of remedy but if the succeeding dose is slightly changed as per sensitivity case everytime potentised what higher 8 succussion (sensitive),10 succussion(less sensitive)12 succussion(least excited) (\$269-\$270)then the vital



Multidisciplinary Indexed/Peer Reviewed Journal. SJIF Impact Factor 2023 -6.753

principle may be altered without difficulty by the same medicine and thus the cure would be soon achieved.

As the show to efficiency homoeopathic medicine in modern world of system of treatment as in Acute case especially fever in children are more ,hyperactive irritable and today parents are anxious about changes occur in pampered children here we need prove the action Homoeopathic medicine with L.M potency which penetrate the power in deeper tissue and cure highly dynamic deranged vital force in shortest period time

As Homoeopathy is individualized so is L.M.potency

- Rapid Action of selected Medicine
- No medicinal Aggravation ,minimum quantity dose
- Rapid ,gentle,Cure in shortest time
- Too frequent repetition is possible
- Dilution makes remedy gentle ready quick to act
- Remedy is taken everyday their no chance of antidoting
- A remedy work much more better when dynamic level of vital force and dose as per susceptibility 8,10,12 succussed.

WIKIPEDIA  
The Free Encyclopedia

### AIM AND OBJECTIVE

- To compare the effectiveness ,efficiency of two approaches with Susceptibility (High or Low) of L.M. POTENCY and other( x, c) potency in fever especially in Children
- To assess the time taken for both approaches with High or low Susceptibility to obtained the complete cure

### Material & methodology and tools for present research work

#### MATERIAL

**Population/ Sample** ; the sample size was optimum probably 100 cases (Detail case taking,onset duration,progress of complaints,investigation etc)

**AGE**: 1yr to 10yrs child male &female

**Duration of study** : one and half yrs

**Study Design**: Descriptive study

**Expected outcome**: L.M potency are more effective in acute febrile cases of fever in children

**Ethical Clearance**: Obtained from Tanta university and faculty of Homoeopathy

**SOURCES OF DATA**: A sample of 100 cases from patients with fever visiting in OPD & IPD of sri Ganganagar Homoeopathic Medical college and Hospital and Research institute for Homoeopathic treatment will randomly assigned for study.

#### PREPARATION OF POTENCY USING X, C, L.M USING DISTILLED

The preparation x, c potency dissolved in 2teaspoonful of water with four globules of selected medicine and repeat as per prescribing dose Preparation of mother solution of L.M potency dose (1globule) of selected potency dissolved in 30ml of distilled water by adding 20 drops plain alcohol and sac lac shake once & give 8, 10,12 succussion as per Susceptibility of case .The indicated L.M. solution repetition as per intensity of fever 1/2hrly,1hrly,2hrly,3hrly till fever in decreasing phase and patient feel better.

#### METHOD OF COLLECTION OF DATA

Data will be collected from patients, attendant physicians observation of activity during fever and physical examination and reaction of child during examination Data like Chilliness ,Appetite,BodyacheThirst,Stool.Vomiting,Sweating,Irritability,Delirium,Headache,Restlessness, Bitterness in mouth tongue were collected from Individual patients in both the group before & after treatment



**INCLUSION CRITERIA**

- Patients of age groups between 1yr to 10yr.
- Both sex male& female
- Diagnostic criteria: Based on the Clinical study,Acute febrile condition is non specific terms for any illness of sudden onset accompanied by fever.
- Improvements criteria are based on the symptomatic relief

**EXCLUSION CRITERIA**

- Patients age group below 1 yr and above 10yrs
- Patients suffering with severe pathology symptoms like severe lung infection (T.B, Pneumonia)
- Patients those who are trying to take other system of medicine along with Homoeopathy.

**Assessment of effectiveness**

This is done after follows the case to case & effectiveness, observed that with medium & low Susceptibility in L.M.Potency improve in Clinical Symptoms reduced temperature gradually and improved in general conditions of child need repetition (Thirst, appetite ,Sleep ,Urine, stool no Vomiting sweating)and Constitutional Symptom(bodyache,headache irritability,delirium, restlessness)complaint subside which individually vary with gradually drop temperature and also that where high susceptibility in patient decrease temperature faster than that less repetition but in X,C potency symptoms decreased takes more time as compare L.M.potency and need also more repetition sometime aggravation occurs which are individual based and may vary irrespective of temperature and drop of temperature with relation of susceptibility

**ANALYSIS**

Data is analysed by using descriptive statistic and result which are presented by using frequency table percentage ,diagram & graphs. In this study the generals of the patients have been compared before and after the treatments by giving medicine in decimal, centesimal potency and in other giving L.M potency with assessment of susceptibility using score which was ascertained and subjected to statistical analysis  $p < 0.05$  is considered as statistically significant.

**OBSERVATION AND RESULT**

The sample study material were selected from those patients with acute fever attending OPD of Sri Ganga nagar Homoeopathic medical college and research institute of sri ganganagar Rajasthan as Inclusion criteria

A Total of 100 cases were selected under age group 1yr to 10yr including both sexes .

The cases were diagnosed on basis of Clinical studies.

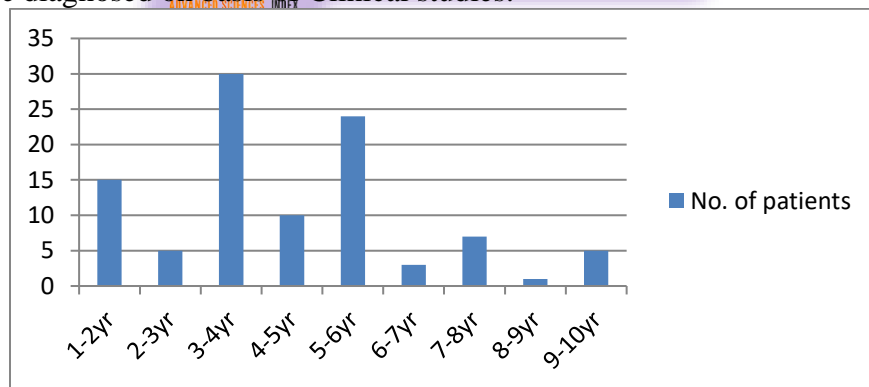


Fig 1 Distribution the study subject based on Age among groups

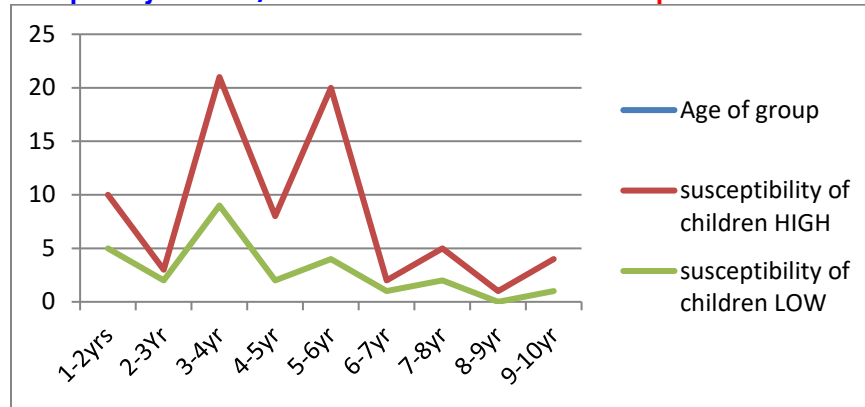


Fig 2: Distribution of study of susceptibility of children in age group.

Tempreture befor treatment	98.6 to 99.4F	99.6 to 100.6F	100.8 to 101.6F	101.8 to 102.4F	102.6 to 103.2F	103.4 to 105F
Group 1	12	8	13	13	1	2
Group2	14	10	12	17	4	3

Table 1: Temperature distribution among group before treatment.

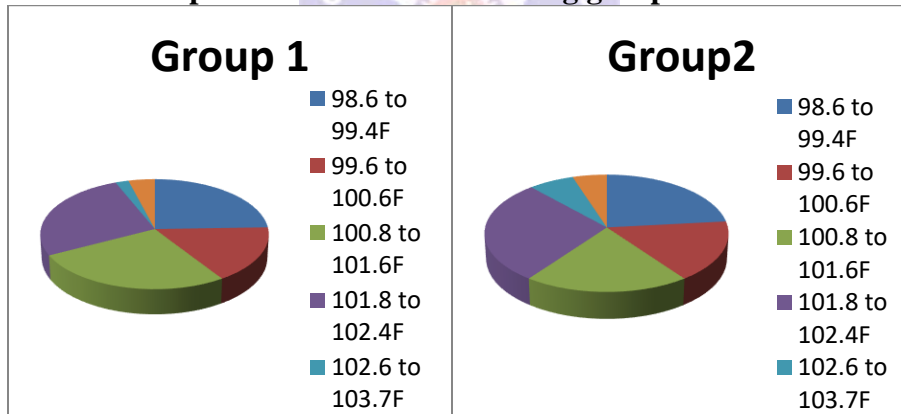


Fig 3: Distribution of temperature among both the groups before treatment.

On analyzing the highest degree of temperature recorded during the admission it found that, in group 2 and highest degree 103.4 to 104.6 F, and maximum patients have temperature in both groups in range 101.8 to 102.4F and moderate range temperature were more both groups 98.6 to 100.4F as per criteria. (Table 1, Fig 2)

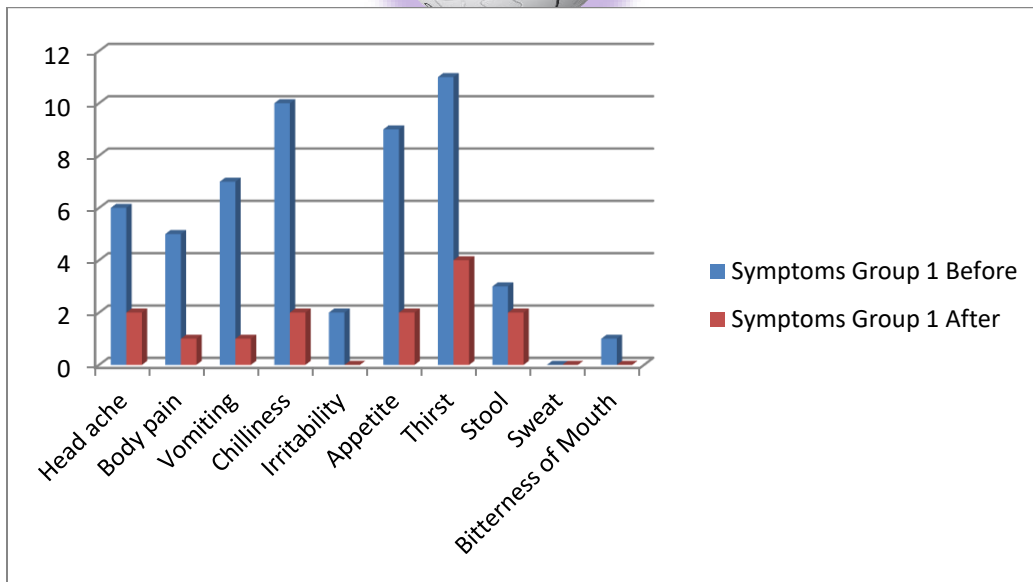
As the assessment of symptoms associated with Fever like headache, body pain, irritability, vomiting, chilliness, thirst, sweating, bitterness of Mouth was done before and after treatment. Observation were made every 6hrs till temperature dropped to normal. It is also analysis that, where in high grade fever with high susceptibility maximum time the potency required 0/1 to 0/3.

Table 2: Distribution of symptoms among the patient in both group.

Symptoms	Number of Patients			
	Group 1		Group 2	
	Before	After	Before	After



Head ache	6	2	7	2
Body pain	5	1	7	1
Vomiting	7	1	3	0
Chilliness	10	2	12	1
Irritability	2	0	2	1
Appetite	9	2	12	1
Thirst	11	4	11	5
Stool	3	2	3	1
Sweat	0	0	2	1
Bitterness of Mouth	1	0	2	0



SHRADHA EDUCATIONAL ACADEMY

Fig 3: Distribution of Symptoms among the patient in group 1 treatment after X and C Potency.

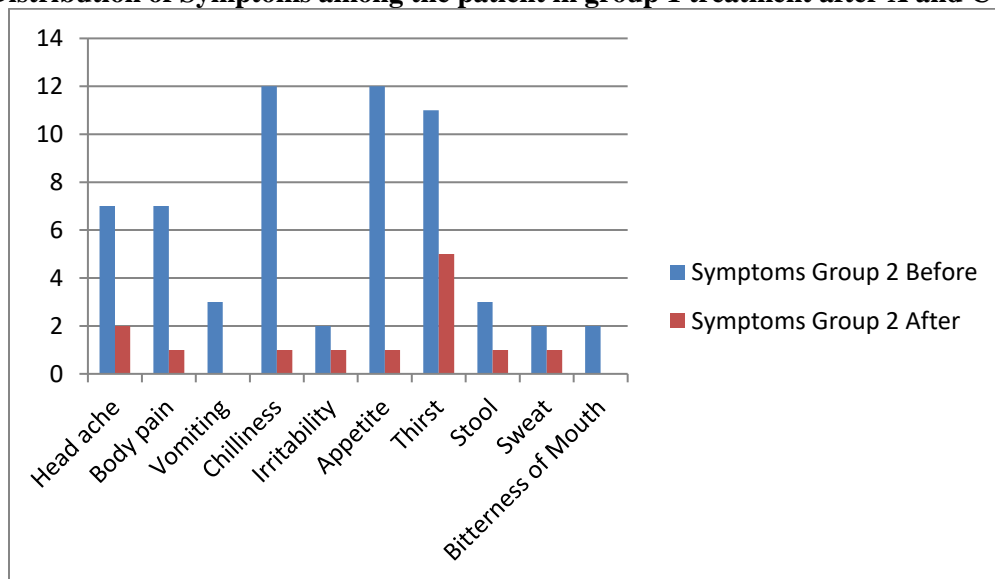
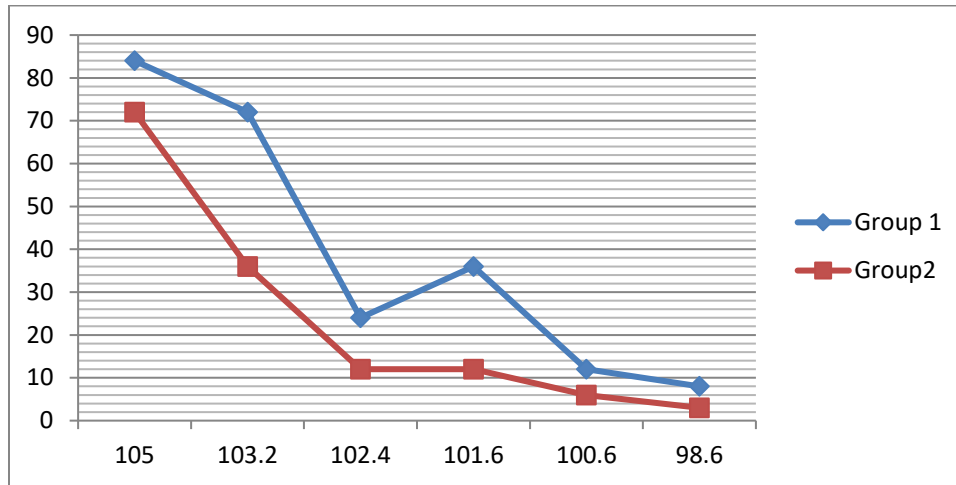


Fig 4: Distribution of Symptoms among the patient in group 2 treatment after L.M Potency.



**Fig 5: Decreases in temperature after homeopathic management with group 1 X, C potency and group 2 LM potency**

The first temperature was noted at the time of visit then temperature is recorded at every 6hrs , 12 hours in group 1 the patient is gradually decrease in temperature as compare to group 2 which is faster than group 1 to reach the normal temperature. So it is analyzed from above statistical analysis as compare to group 1 potency work faster than in group 2(Fig 5).**Statistical analysis**

Table :- Comparison of scores			
Scores			
Group1		Group2	
before	after	before	after
11	3	15	9

11	4	11	3
10	3	12	6
8	2	8	4
10	3	14	3
7	1	12	0
19	5	10	7
8	5	16	6
20	6	16	1
12	5	9	2
15	0	13	3
8	3	8	3
15	3	12	0
15	3	15	0
10	6	9	3

Paired T-test for the scores of group cases		
	T-stat	P value
Paired t-test for scores of groups 1 cases	3.693	0.0002*
Paired t-test for scores of groups 2 cases	2.197	0.016*
t-test for scores between group1 and group2	0.432	0.332

Note : \* indicate statistical significance

The test of statistics T equals 3.693 for group 1, 2.197 for group 2, which is found significant at 95% level. Whereas 0.407 lies in the region of rejection, therefore it is found not found significant the p-value is found smaller than  $\alpha$ -value (0.05) the more is support our study hypothesis to be accepted.

**FINDING DISCUSSION**

FEVER is a symptom not a disease it's our body normal response to infection its reaction immune system against infection ,incidences of fever is common in childhood(1yrto10yr)of Age



Multidisciplinary Indexed/Peer Reviewed Journal. SJIF Impact Factor 2023-6.753

groups, nontoxic illness associated with increased temperature is often called FEVER without a source or FEVER without localizing signs. The majority of children with fever have either self-limited viral infection or known source of bacterial infection. One third of pediatric outpatient are generally visit for treating fever [11,12]. In a cohort study conducted in children having febrile illness, bacterial infection was diagnosis in 36% cases, viral infection in 4% of the cases and rest mostly diagnosed as fever without a source [13]. Fever increases with other associated diseases like UTI, Tonsillitis and other conditions like teething immunization etc

As we know, Fever is significantly influence when there change in weather atmosphere & demographic factors such Age sex race and climatic change in different individual more or less effects as per ability which show more or less indication susceptibility of individual, susceptibility is an inherent Capacity of living organism to react to stimuli in environmental and represents a fundamental quality of living organism. "it is a reaction power of organism to the external and internal influence"... H.A. ROBERT. vital signs associated with fever will help to assess the general physical health of child and show the progress toward recovery.

The vital signs taken for study are headache, chilliness, sweating, bodyache, Vomiting, Thirst, Appetite, Stool, & bitterness of tongue were collected from individual patient. Mostly symptoms along with fever are bodyache, chill, dryness of mouth, thirst, slow digestion, bitter sensation in mouth with fatigueness (16) which get relief after cure.

Temperature is one parameter which shows how much increase heat in our body which is measured in normal 98.6F (Fahrenheit) & 37 celsius in orally but in axilla it is 97.4F & in Anus it is 99.4F. Generally low grade fever range from 99 to 100F, moderate range from 100 to 101F & High grade from 101 to 104F. Temperature above 104F it is Dangerous goes up to 106F called Hyperpyrexia. Sometimes in high grade fever more sensitive child more efficiency toward infection where susceptibility is high so Rarely occur febrile seizures (17) if in time as per susceptibility infection ie reaction of body fever can I easily control by assessment of case on symptoms similarites with proper L.M. potency dose in repeated by giving 8, 10, 12 succussion slightly upgrade potency and administered in dilute formed are much effective fever get decrease and within few hours or may 1 day Or 2 days child restored original state of health.

L.M. potency is too faster than decimal & centesimal potency, because of degree of Dynamisation in L.M. potency every potency upgrade by 50000 times then previous potency and dose administered succussed dose it tend more powerful to acts diluted formed, if the dose is in every case varied and modified only a little degree of dynamization then vital force of patient will calmly and asit were willingly receive the same medicine in diluted formed and repeated in brief interval of time gives best results where every times increasing the well being of the patient the practice highly dynamise medicine and succussive increasing the potency of dose bring up rapid cure.

The present has been an attempt to prove the significance of L.M. potency with assess susceptibility in acute case of fever where diagnosis is simple and versalite. The subside in both group who were with L.M. potency and other X or C potency but in Decimal or Centesimal fever takes time and also re-accured after 24 hrs or 72 hrs as proving method not as effective L.M. potency. Statistical analysis (t test) also showed that L.M. POTENCY is significant in bringing cure as compared to other scale potency.

### MANAGEMENT OF FEVER

As per CCRH, In case of high fever, continuous cold sponging is advised till temperature lower. (18). The patients having high grade fever should admitted and kept under observation and





room temperature is maintained along with this adequate fluid intake such as oral rehydration solution water fruit juice to maintained electrolyte balance of body.

## CONCLUSION

This study shows that, when medicine given L.M.POTENCY gave better result than medicine given in other potency in repetition .The L.M POTENCY given dilute formed with much high efficiency to overcome from influence with slightly upgrading by 8,10, or 12 succussion to cover high dynamised diseased force and to overcome Rapidly with using L.M. POTENCY. The time taken for the positive response in group 2 patients was very rapid quick and gentle manner then group

## References

- 1) Lectures on Homoeopathic Philosophy J. KRNT New Delhi B Jain Publisher 106, 113,118.
- 2) Hahnemann's organon of medicine B. K. SARKAR Delhi Birla publication
- 3) The Principle and art of cure by Homoeopathy H. A. ROBERT B. Jain Publication Reprint edition 1989,2017 [7-15]
- 4) Susceptibility reaction and immunity – genius of Homoeopathy Lectures and essays on homoeopathic Philosophy by Dr. Stuart, M. Close 2011 chapter vii pg 76
- 5) Samuel Hahnemann organon of medicine 5th & 6<sup>th</sup> edition, New Delhi B Jain Publisher pvt Ltd 2011 122-127p
- 6) A Treatise on organon of medicine Dr A.k.DAS 2007 112-114
- 7) Patel R. P. My experiments with 50 Millesimal scale of potency 5<sup>th</sup> edition reprint Kottayum Kerala Halam born publisher pharmacy 1986pp73
- 8) DR Schepper L.M potencial one hidden treasure of Homoeopathic 6<sup>th</sup> edition of organon of Medicine B Homoeopath 1999
- 9) Organon of medicine 6<sup>th</sup> edition William Boericke \$5,7,11,18,31,72,73
- 10) The choice of potency and Dose Hahnemann's advanced methods
- 11) Practice guideline for management of infants and children 0 to 36 month of age with fever Without source – baraff. L. J. Base . J. W.Fleisher GR – Agency for Health care policy And research med 1993,22;1198
- 12) Finkelstein JA, Christiansen CL, platt R. Fever in pediatric primary care; accurrence managements and outcomes pediatrics 2000;105;260
- 13) Nelson D S, Walsh k spectrum and frequency of pediatric illness presenting to a general community hospital emergency department pediatrics 1992 90;5
- 14) Susceptibility, potency selection and repetition of dose in Homoeopathy [www.slideshare.net](http://www.slideshare.net)
- 15) Text book of Homoeopathic Pharmacy Mandal and Mandal reprinted 2002
- 16) <http://symptomchecker.webmd/31/1/148>
- 17) [http://www.emedicinehealth.com/fever\\_in\\_adult/article\\_em.htm](http://www.emedicinehealth.com/fever_in_adult/article_em.htm)
- 18) [ccrhindia.org/dengue\\_epidemic.asp](http://ccrhindia.org/dengue_epidemic.asp)
- 19) Adler V.C. Aldet Hahnemann experiment with 50 millesimal potency case book Hom pp 95,171, 81.
- 20) Homoeopathic treatment of fever-[www.homopathicorg.com](http://www.homopathicorg.com)
- 21) <http://abchomoeopathy.com/forum2.php/13614>
- 22) Effect L.m potency in homoeopathic general practice Dr sumanth.B.L [www.bilstream.com](http://www.bilstream.com)
- 23) Best Homoeopathic medicine for fever in child and adult dr saumaya Avinashi- [www.lybrates.com](http://www.lybrates.com)
- 24) <http://healthyhomoeopathy.com/article/using-liquid-remedies-for-greater-flexibility-in-homoeopathic-prescribing-and-case-management>
- 25) I.C.R Operational manual 3<sup>rd</sup> publication M.L.Dhawale A.KAPSE 2011
- 26) Art and Science of Homoeopathic Pharmacy Dr Sumit Goel.
- 27) William Boericke – “Pocket manual Homoeopathic Materia Medica & Repertory “Published by B. Jain (P) Ltd 6<sup>th</sup> edition 2006.”